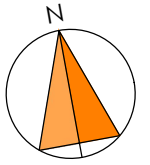
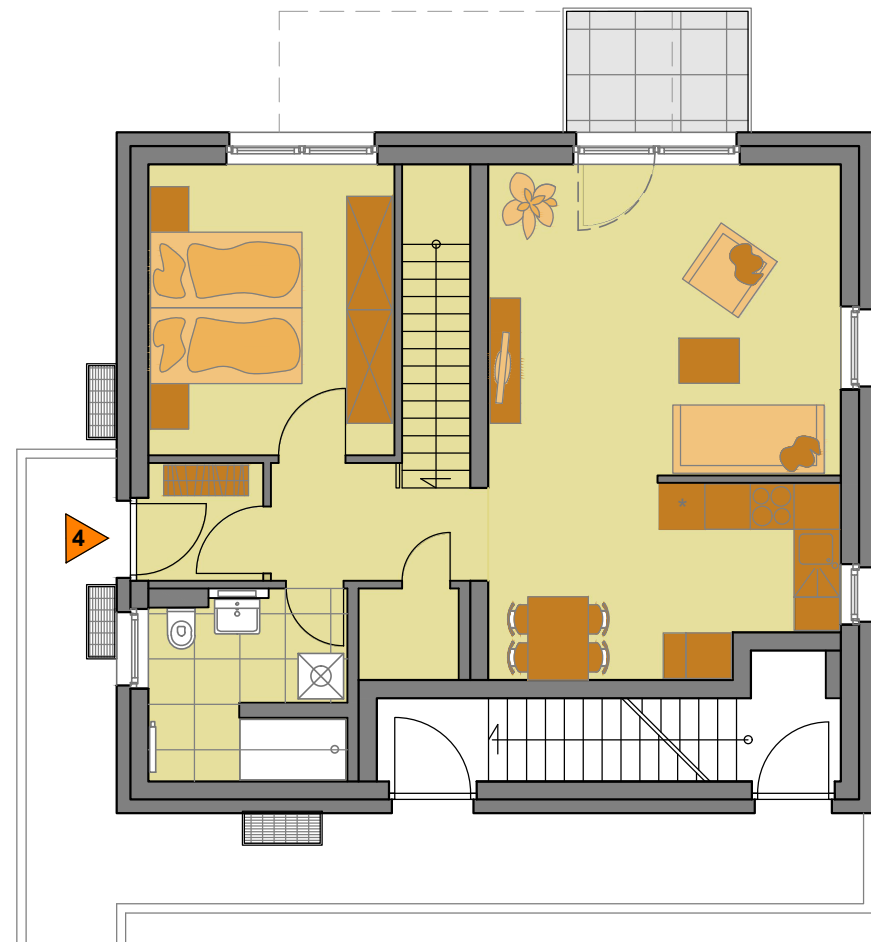


# Wohnanlage

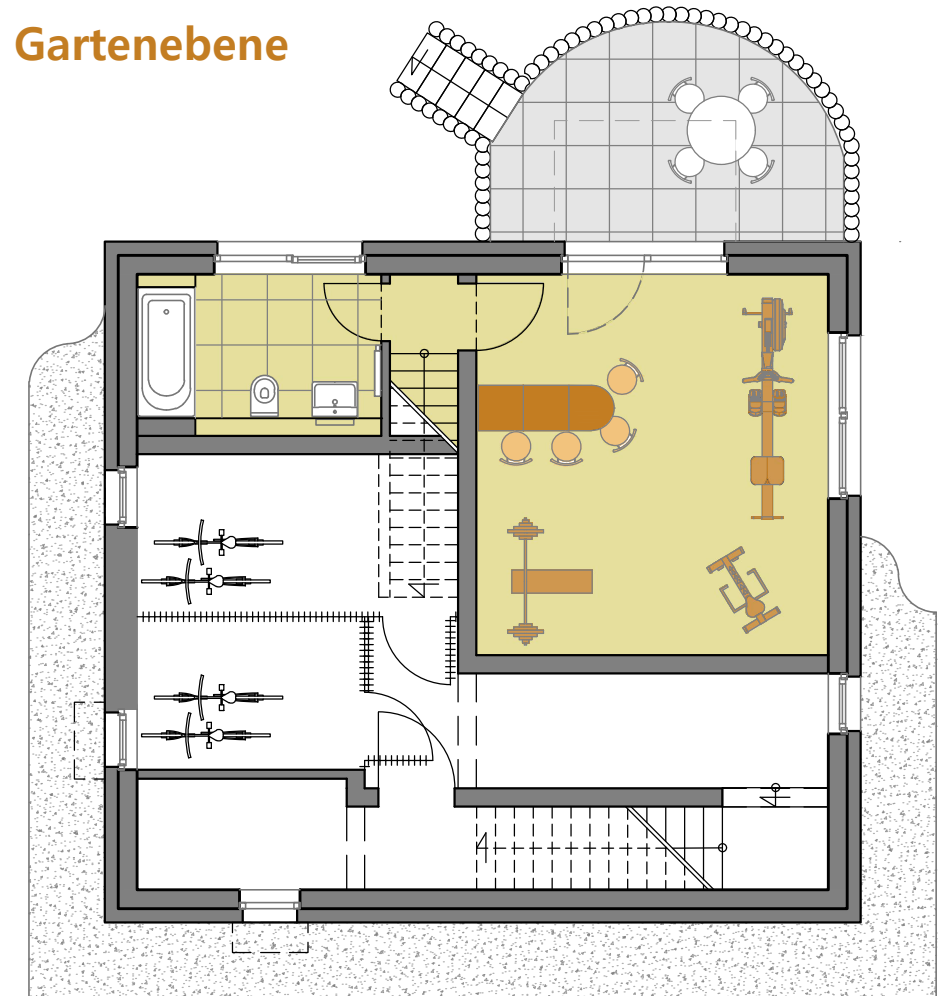
Altnossener Strasse 6  
in 01156 Dresden



## Gartenhaus Erdgeschoss



## Gartenhaus Gartenebene



### Wohnung 4

3 Zimmer 96,24 m<sup>2</sup>

Windfang	2,36 m <sup>2</sup>	Abstellraum	1,60 m <sup>2</sup>
Flur	4,10 m <sup>2</sup>	Balkon /zu 50%/	1,92 m <sup>2</sup>
Küche	11,23 m <sup>2</sup>	Flur Gartenebene	0,95 m <sup>2</sup>
Wohnen	19,43 m <sup>2</sup>	Zimmer	23,46 m <sup>2</sup>
Zimmer	12,54 m <sup>2</sup>	Bad	6,73 m <sup>2</sup>
Bad	6,22 m <sup>2</sup>	Terrasse /zu 50%/	5,70 m <sup>2</sup>



Vermietung:  
Tel.: 0162 3142542  
info@cosmo-dresden.de

Bauherr:  
Iris u. Thomas Porstein